



A SAFEGUARD INDUSTRIAL COMPANY

*SPECIALIZING IN SAFETY PRODUCTS FOR THE HAZARDOUS ENVIRONMENT.*

# DIAMOND GRINDER

## 500 E

## PARTS MANUAL

[www.aramsco.com](http://www.aramsco.com)

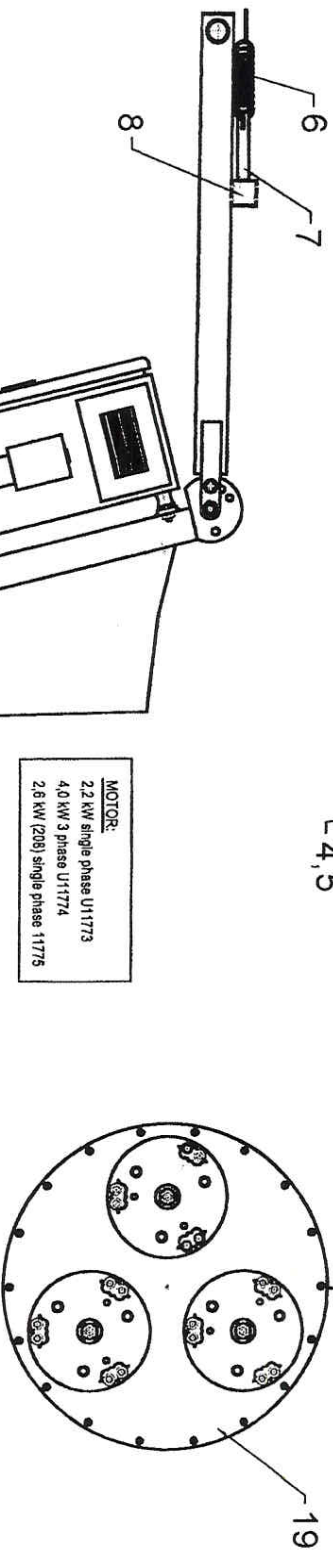
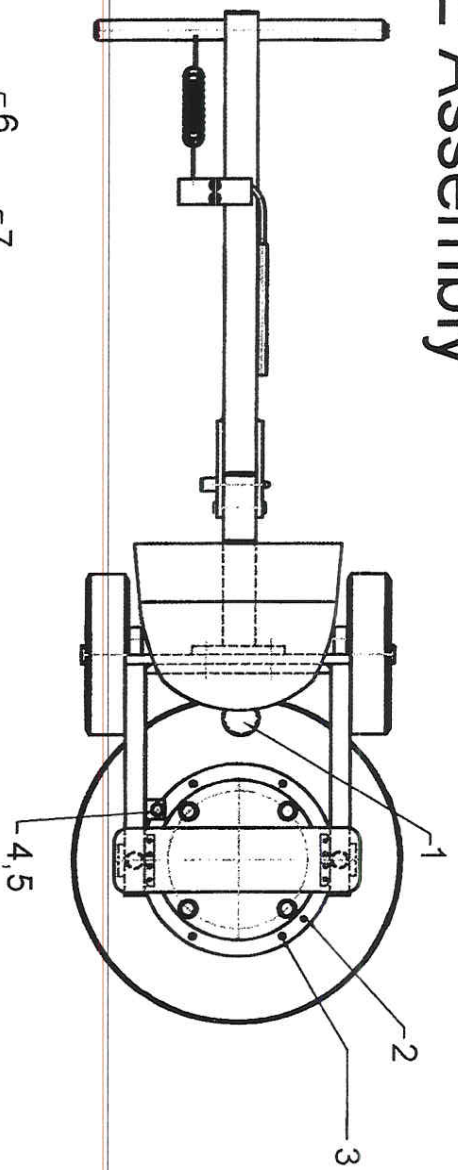
1480 GRANDVIEW • THOROFARE, NJ 08086 • (856) 686-7700 • (800) 767-6933 • FAX: (856) 848-0802

PHILADELPHIA • CHICAGO • HOUSTON • DALLAS • TAMPA • BOSTON • NEW ORLEANS  
HARTFORD • PHOENIX • LOS ANGELES • INDIANAPOLIS • NEW YORK • DURHAM • SAN JUAN

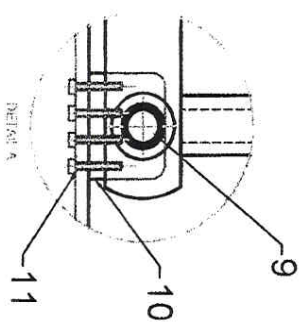
## Table of Contents

[illegible]

# 500 E Assembly



MOTOR:  
 2.2 kW single phase U11773  
 4.0 kW 3 phase U11774  
 2.6 kW (208) single phase 11775



VIEW B

VIEW B

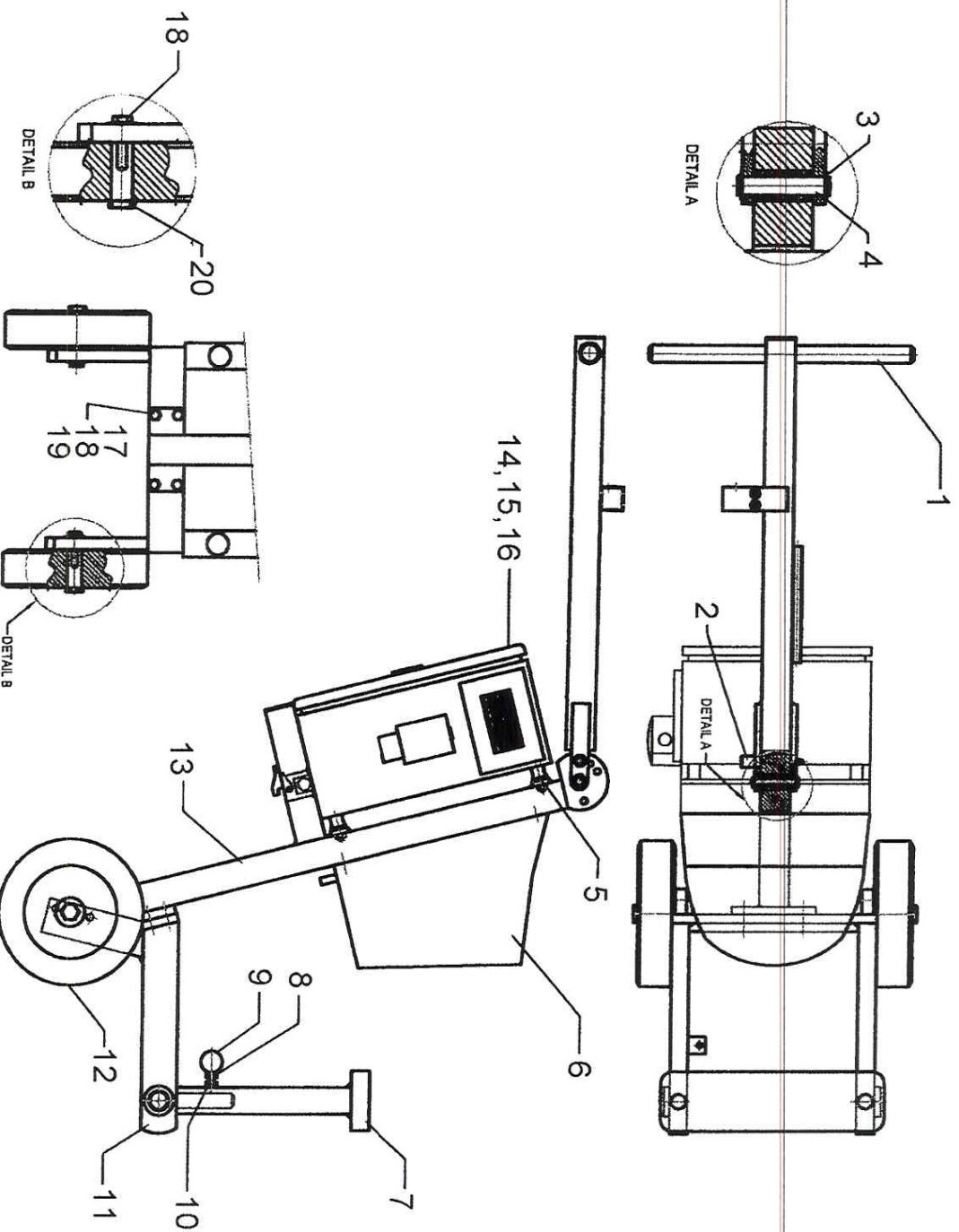
# Diamatic 500 E

Revision April 2003

## List of items fo 500 E Assembly

Position Number	Article Number	Universal Number	Description	Qty. per machine
1		U11751	COVER	1
2		U11750	PIN	
3		U11784	SCREW, SOCKET HEAD CAP M6 X 20	18
4		U11781	NUT, HEX M8	2
5		U11813		
6		U11758	CORD, SAFETY	1
7		U11759	PIN, SAFETY	1
8		U11760	SWITCH, SAFETY	1
9		U11752	BOLT, HINGE	2
10		U11753	PLATE, HINGE	2
11		U11754	BOLT, HEX M8 X 35	8
12		U11777	CABLE, MOTOR (WITH CONNECTOR)	1
13		U11770	TAP, WATER	1
14		U11771	HOSE, WATER	1
15		U11764	RING, DUST	1
16		U11763	WASHER, M14	
17		U11762	BOLT, HEX M14 X 50	
18		U11761	WASHER, M6	18
19		3003	PLATE, BOTTOM	1

# 500 E Frame



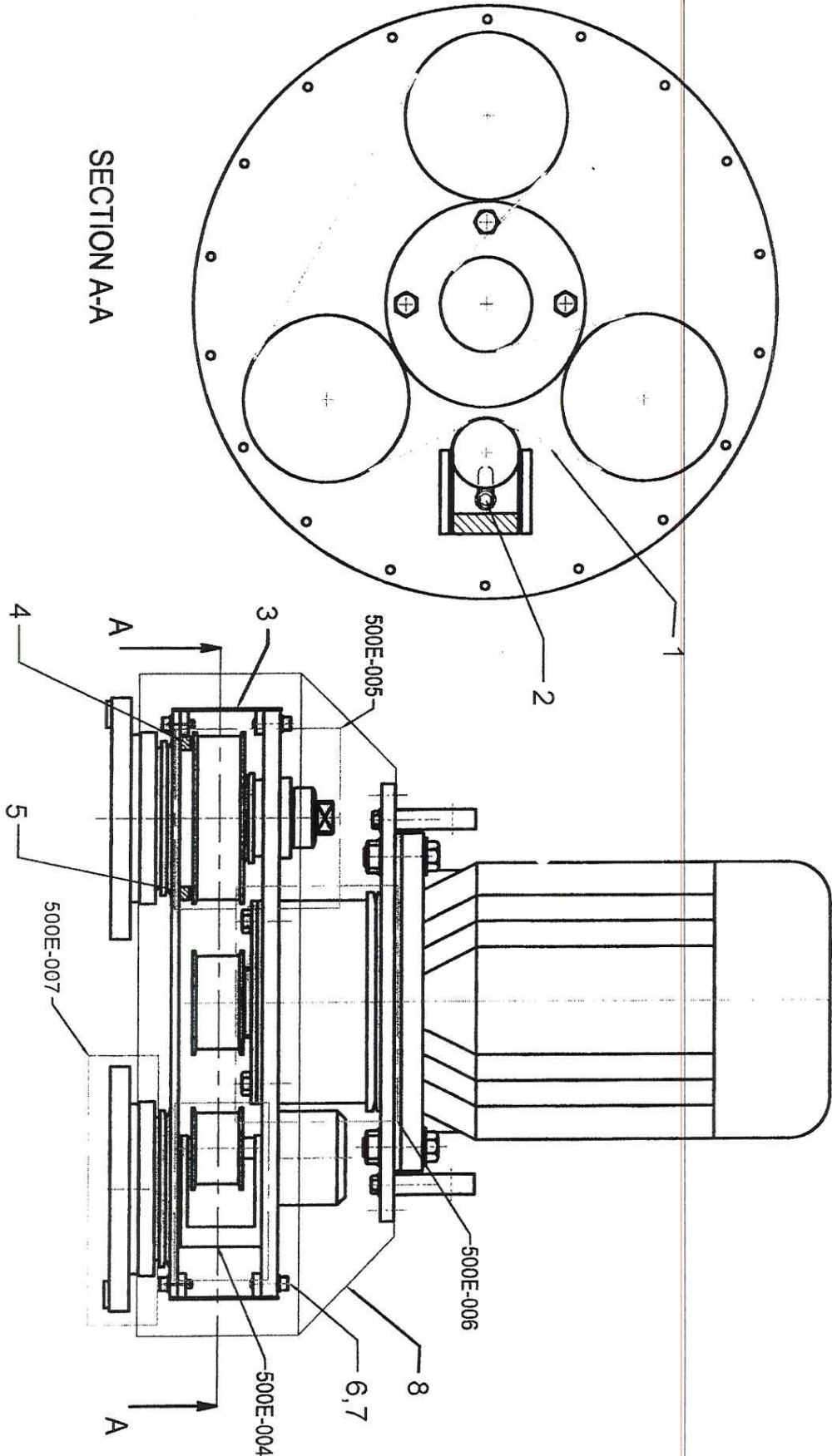
# Diamatic 500 E

Revision April 2003

## List of items for Frame

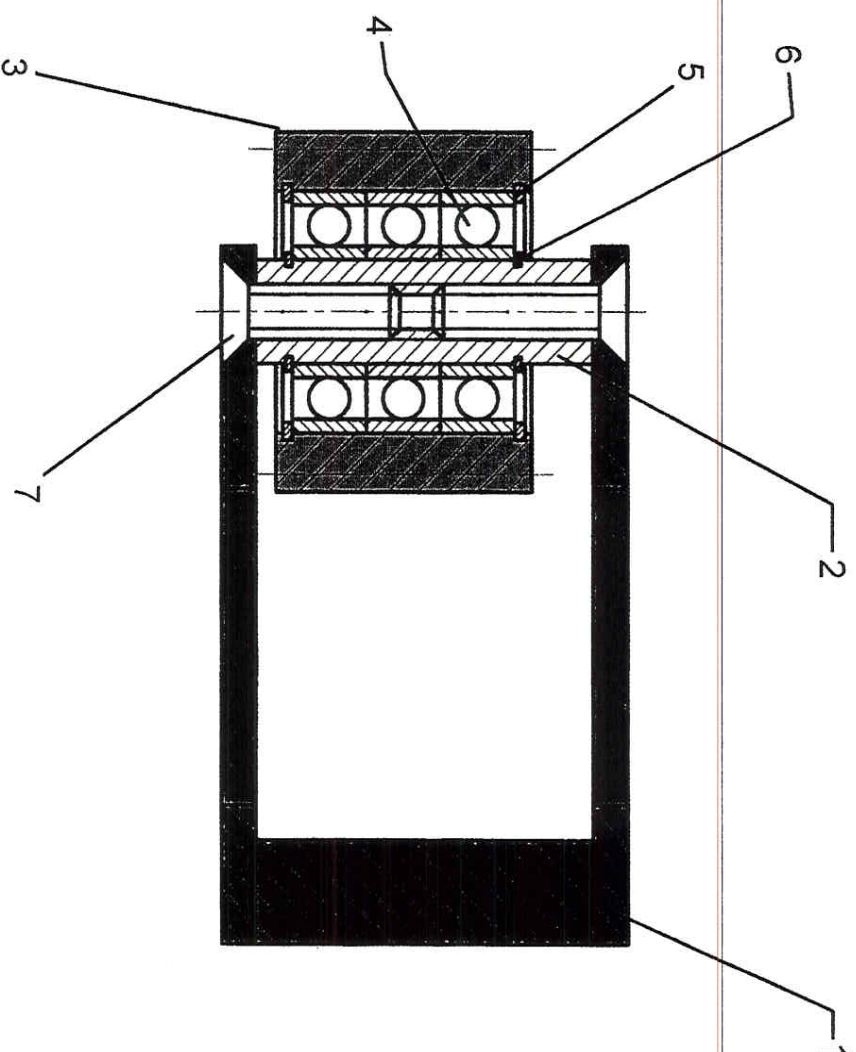
Position Number	Article Number	Universal Number	Description	Qty. per machine
1		3004	PLATE, BOTTOM	1
2		U11750	PIN, HANDLE	1
3		U11794	RING, RETAINING 35MM	2
4		U11757	PIN	1
5		3002	BUFFER	4
6		U11772	TANK, WATER	1
7		3001	WEIGHT	1
8		U11776	NUT HEX M10	2
9		3006	KNOB, BALL	1
10		3007	THREADED END	1
11		3000	FRAME	1
12		U11755	WHEEL	1
13		3005	HANDLE, STEERING	1
14		3010	BOX, ELECTRICAL 2.2 Kw	1
15		3009	BOX, ELECTRICAL 4.0 Kw	1
16		3008	BOX, ELECTRICAL 2.6 Kw	1
17		U11768	WASHER, M12	4
18		U11769	BOLT, HEX M12 X 40	4
19		U11756	NUT, HEX M12	4
20		U11765	BOLT, WHEEL	2

# 500 E Belt Section





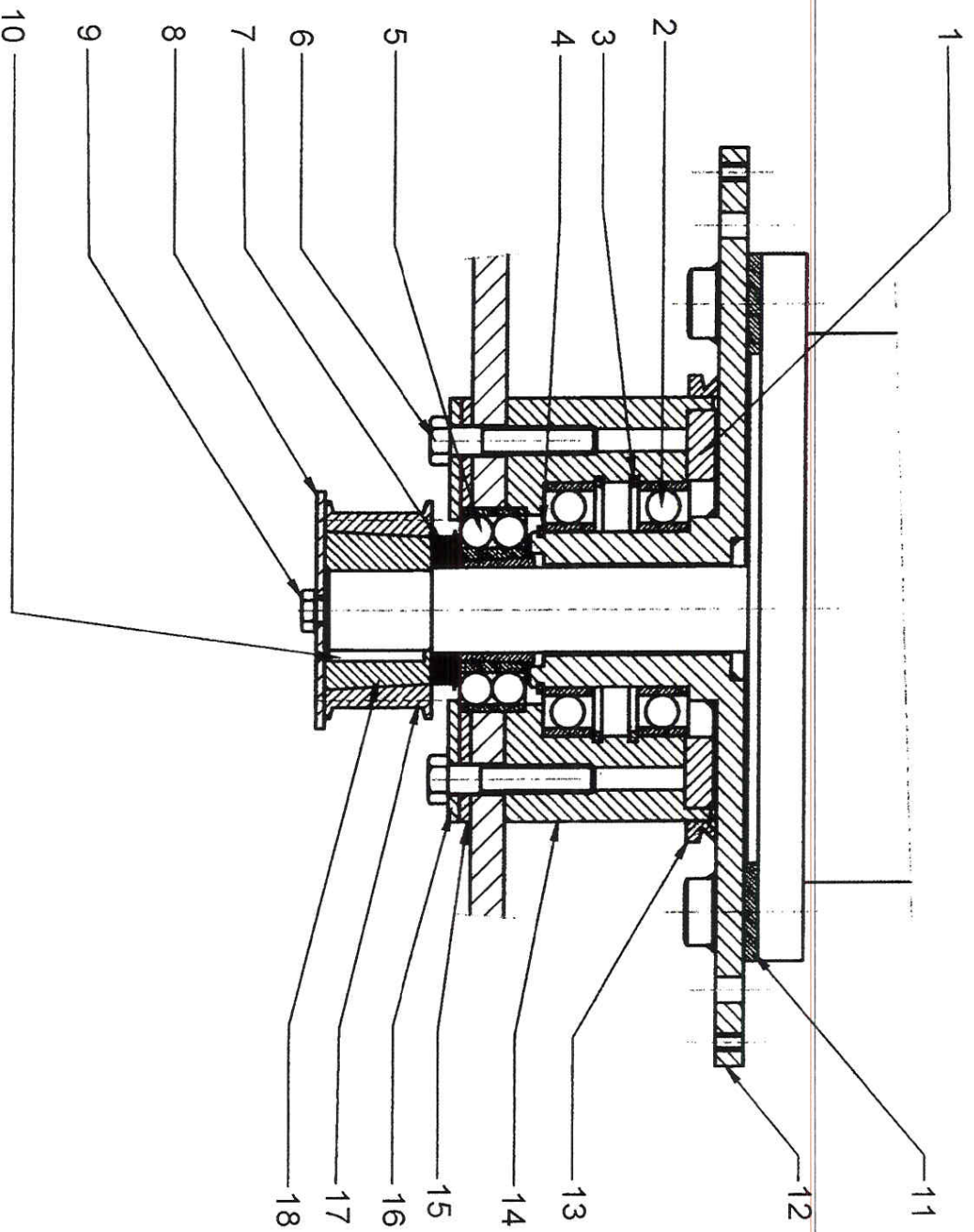
# 500 E Tension Pulley



## Revision April 2003

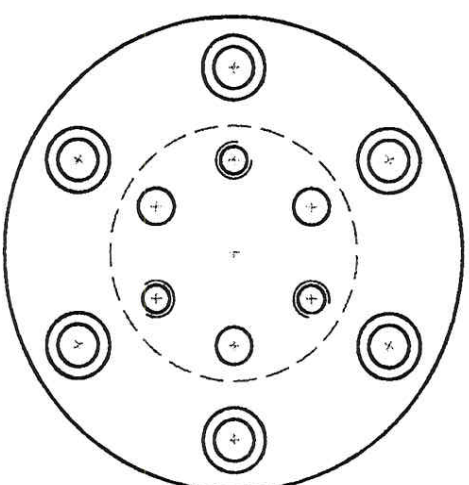
[illegible]

# 500 E Center Pulley





Technical drawing of a mechanical assembly in cross-section, labeled with numbers 1 through 11. The drawing shows a central shaft with various components including bearings, seals, and a housing. A dashed line indicates a section cut.





# 500 E Holder

